








## WAMS Standard Products Price List



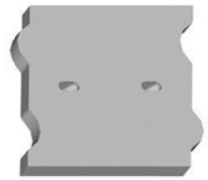

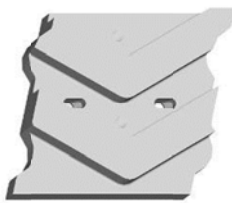
Effective July 2011

### Standard Liners

	Description	Part No.	Length (mm)	Width (mm)	Thick (mm)	Mass (kg)	Hole c's (mm)	Price (ea)
1.	 <p>The WAMS patented "<b>Gridlock Liner System</b>" features anti-wash joints thus minimising preferential joint wear. Various sizes are available within the "standard range" of these liners and custom liners are also available to suit your application. A modular liner system like the "<b>Gridlock System</b>", incorporates smaller, easier to handle components (all with integral M20 lifting thread) reducing the risk of manual handling injuries. The key benefit to any modular lining system is that you are only changing the <b>WORN</b> liners in any given area, thus reducing maintenance time and cost. And with the anti-wash joints these "<b>Gridlocks</b>" offer the best value of any modular liner system!</p>							
2.	 "Grid Lock" Liner Tile (Patent Applied for)	W00975	75	300	30	5.4	152	POA
W00976		75	300	40	7.2			
W00977		75	300	50	9.1			
3.	 "Grid Lock" Liner Tile (Patent Applied for)	W00978	100	300	30	7	152	POA
W00979		100	300	40	9.7			
W00980		100	300	50	12.1			
4.	 "Grid Lock" Liner Tile (Patent Applied for)	W00981	150	300	30	11	152	POA
W00982		150	300	40	14.5			
W00983		150	300	50	18			
5.	 "Grid Lock" Liner Tile (Patent Applied for)	W00984	200	300	30	14.5	152	POA
W00985		200	300	40	19			
W00986		200	300	50	24.2			



### Standard Liners

	Description	Part No.	Length (mm)	Width (mm)	Thick (mm)	Mass (kg)	Hole c's (mm)	Price (ea)		
6.	 <p>"Grid Lock" Liner Tile (Patent Applied for)</p>	W00987	250	300	30	18.1	152	POA		
		W00988	250	300	40	24.2				
		W00989	250	300	50	30.2				
7.	 <p>"Grid Lock" Liner Tile (Patent Applied for)</p>	W00990	300	300	30	21.7	152	POA		
		W00991	300	300	40	29				
		W00992	300	300	50	36				
8.	 <p>"Grid Lock" Liner Tile (Patent Applied for)</p>	Some applications call for Gridlock Liners with the "hole centres" horizontal – these too are available – the GLH Series, contact your WAMS representative for more information.								
9.	 <p>"Grid Lock" Half Liner Tile (Patent Applied for)</p>	Custom tiles to suit application	150	300	30	8	152	POA		
					40				15	
					50					18
					60					
10.	 <p>"Grid Lock" V-Rock Box Liner Tile (Patent Applied for)</p>	W00998	300	300	80 (50 thick rib)	51.5	152	POA		



### Standard Liners

	Description	Part No.	Length (mm)	Width (mm)	Thick (mm)	Mass (kg)	Hole c's (mm)	Price (ea)
11. 	Standard Liner Tile	W05167	300	300	25	17.7	153	POA
12. 	Standard Liner Tile 50 Thick	W01002	300	300	50	35.4	153	POA
13. 	Half Standard Liner Tile	W05166	300	150	25	9	153	POA
14. 	Half Standard Liner Tile 50 Thick	W01003	300	150	50	18.2	153	POA
15. 	Triangular Liner	W01004	300	300	25	9	N/A*	POA

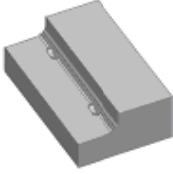


**Standard Liners**

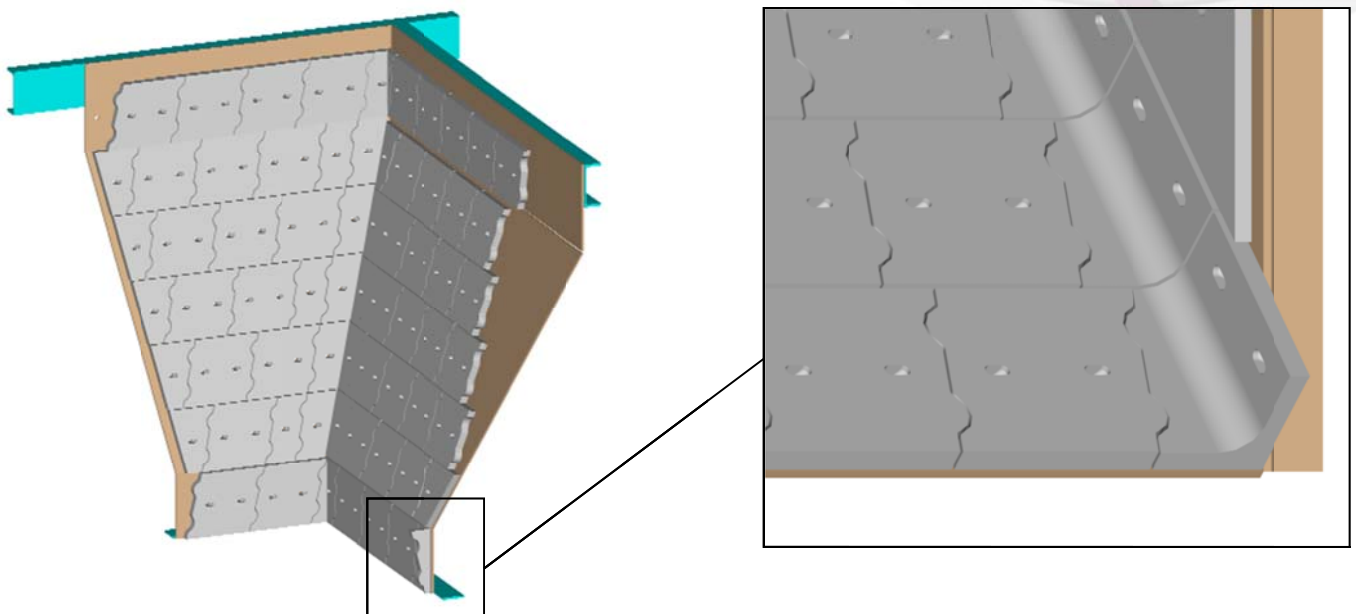
	Description	Part No.	Length (mm)	Width (mm)	Thick (mm)	Mass (kg)	Hole c's (mm)	Price (ea)
16.	 Triangular Liner 50 Thick	W01005	300	300	50	18	N/A*	POA
17.	 Standard Billet	W01006	300	75	50	8.5	153	POA
18.	 Billet Type 1	W01010	299	150	100	35	N/A*	POA
19.	 2 Rib Rock Box Liner	W01008	300	300	25 Plate 32 Rib 57 O'all	22	153	POA
20.	 Rock Box Liner	W01009	300	300	25 Plate 32 Rib 57 O'all	29.7	153	POA
21.	 Billet Type 2	W01011	222	150	100	26	N/A*	POA



**Standard Liners**

	Description	Part No.	Length (mm)	Width (mm)	Thick (mm)	Mass (kg)	Hole c's (mm)	Price (ea)
22. 	Ledge Liners	W00993	290	150	85	25	150	POA

\* Sample "GRIDLock" application;



Key Features and Benefits of standard tiles;

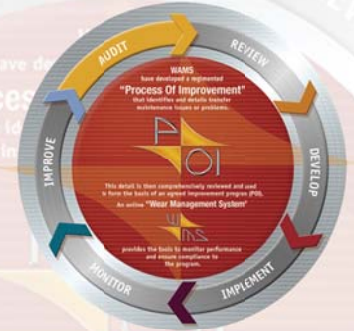
- Modular liner system incorporating smaller easier to handle components (approx 28kg) reducing the risk of manual handling injuries. The key benefit to any modular lining system is that you are only changing the worn liners in any given area, thus reducing maintenance time and cost.
- 600BHN cast white iron liners double the hardness of the existing liner system leading to increased wear life.
- WAMS patented "Grid Lock" liner system featuring anti wash joints thus minimising preferential joint wear.



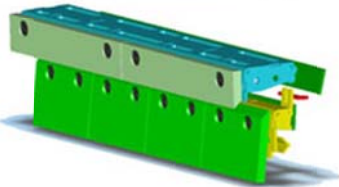
### Forged Liner Bolts

	Description	Part No.	O/all Length (mm)	Head Length (mm)	Thread Length (mm)	Thread Pitch (mm)	Mass (kg)	Price (ea)
23.	 M20 Gr 8.8 Oval Head Liner Bolt C/W Nyloc Nut and Washer	W01019	130	47	58	2.5	N/A	POA
24.	 M20 Gr 8.8 Oval Head Liner Bolt C/W Nyloc Nut and Washer	W01020	75	21	49	2.5	N/A	POA
25.	 M16 Gr 8.8 Oval Head Liner Bolt C/W Nyloc Nut and Washer	W01021	62	22	35	2	N/A	POA

- Hole centres and bolt details can be provided upon application.
- Prices are valid for 30 days from effective date.
- Material; WAMHard (Hard wearing high chrome white iron), alternative materials also available including Q&T Plate, Manganese, Weldable Alloy Steel, Hard Faced Overlay Plate, Ceramics, Rubber\Ceramic Composite, Rubber, Polyurethane etc.
- This list is only a sample selection of WAMS range of standard liners. Some situations may require a customised application of these and other unique tiles, please contact your local WAMS representative to discuss these options.
- WAMS also has the ability to custom design products to any individual site requirement. Much of this design work is done in-house with state of the art 3D solid modelling software.



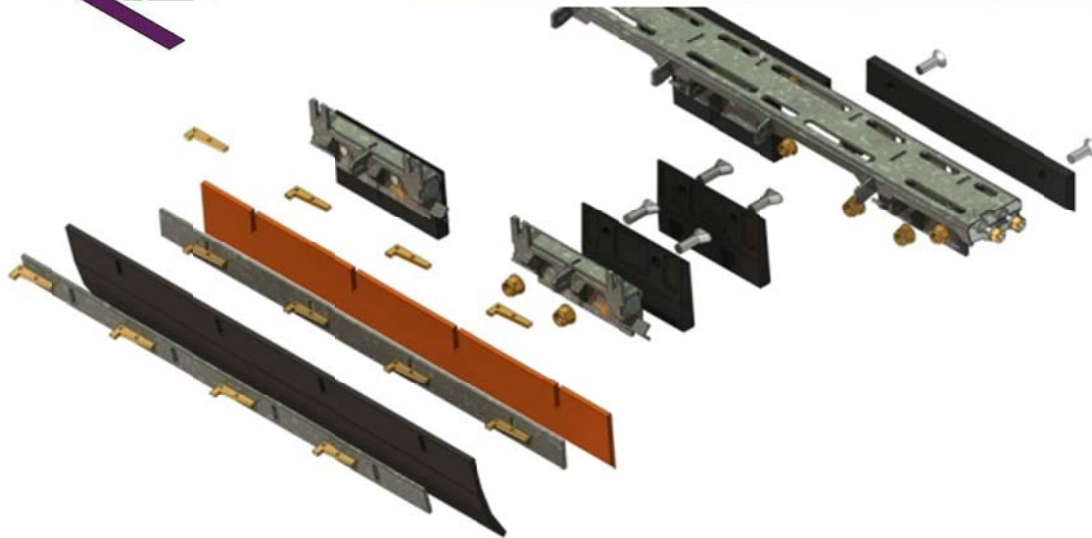
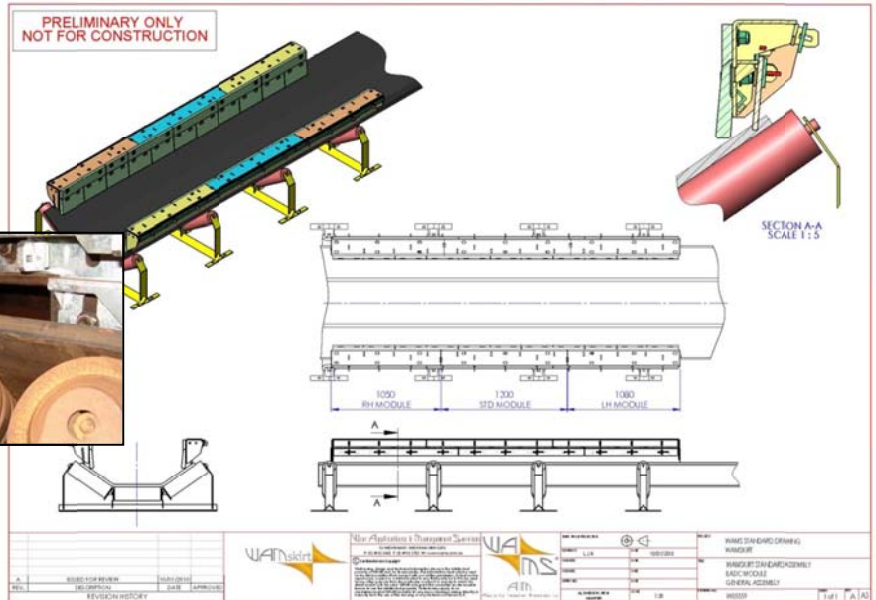
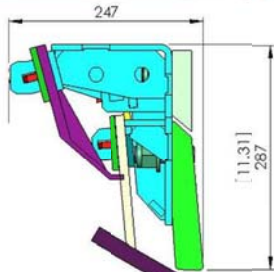
26.



Patented Skirt liners can be fully maintained externally thus eliminating confined space entry requirements and reducing the risk of manual handling injuries associated with liner and skirt seal replacement. Uniquely designed "UHMWPE" primary and "Rubber" secondary skirt seals to provide superior sealing. Refer pictures below...

Save time, money & confined space requirements!

\* Installation costs and/or bulk discounts may apply (dependent upon application) so pricing is best discussed with your WAMS area manager.





AIM  
Availability Innovation Maintainability



**CONDITION MONITORING:**

WAMS also offer a comprehensive condition monitoring service, complete with a state of the art online database providing live access to "Forecast Reports" on each area (chute or loader) monitored. "Historic & Budgetary" reporting is also catered for – Any Time – Any Where!

Drawings, Arrangements, access & Safety information and forms are also catalogued online, again giving you unrivalled access to your data – print this info from ANYWHERE, ANY TIME! This 24 hour access meets the demands of busy planners providing them and their staff detailed (or summary) info from any computer with just a few clicks. Onsite labour hire and services are also available, contact your local WAMS area manager.

Home Input Output Admin Logout

Company: Newcrest Mine: Cadia Mobile Fleet Area: BD-04

**Newcrest Cadia Mobile Fleet BD-04**

- Zone: CUTTING BLADE CTR
- Zone: CUTTING BLADE LH
- Zone: CUTTING BLADE RH
- Zone: TRACK LH
- Zone: TRACK RH
- Zone: WING LH
- Zone: WING RH

Home Input Output Admin

Mines > Mine: Ridgeway Chutes > Area: Picking Conveyor Discharge Chute

Area Details

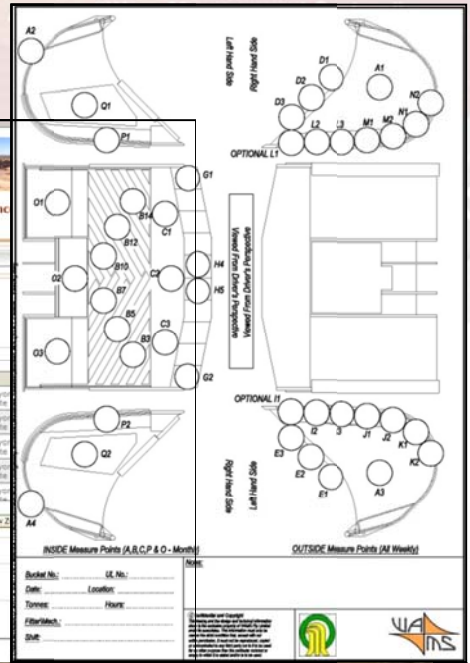
Name: Picking Conveyor Discharge Chute

Type: Chute

Material: Food

Files: 14/05/2008

Update



Area Act:

Change Manual Report Notes

Print

Return

**BD-04**

Zone	Installation Date	Current Measurement Date	Current Thickness	Remove Date	Destroy Date	Tonnes Processed	Tonnes To Go	Thickness (mm/hour)	Remove Thickness	Destroy Thickness
Blade	22/01/07	16/02/07	315.0	14/03/07	15/03/07	8942	9713	<400	225	225
LH	02/02/07	16/02/07	110.0	07/04/07	21/04/07	4587	18730	122	67	55
Track	02/02/07	16/02/07	110.0	07/04/07	21/04/07	4587	18730	122	67	55

Notes Section

Current Inspection Notes

Measured Tracks and Blade

Measurement Pictures

Measurement Sheet





AIM  
Availability Innovation Maintainability



Please contact a local WAMS office for more details on our complete range of products and services

**NEWCASTLE OFFICE (HEAD OFFICE)**

12 Wickham Street  
Wickham NSW 2293  
Po Box 875  
Newcastle NSW 2300

**Phone** 02 4962 3433

**Fax** 02 4962 3722

**Email** [support@wams.com.au](mailto:support@wams.com.au)

**PARKES OFFICE**

Parkes NSW 2870

**Phone** 0438 22 55 60

**Email** [support@wams.com.au](mailto:support@wams.com.au)

**ORANGE OFFICE**

60 Lords Place  
Orange NSW 2800

**Phone** 02 6360 1333

**Fax** 02 6360 1344

**Email** [support@wams.com.au](mailto:support@wams.com.au)

**PERTH OFFICE**

**Phone** 08 9249 2089

**Email** [support@wams.com.au](mailto:support@wams.com.au)